

KÂRMA SOUNDS



Experience the pure sonic enchantment of Kârma Sounds...

Hailing from Montreal, Karina Morin, the powerhouse behind Kârma Sounds, has mesmerized audiences in Vancouver and beyond with her captivating melodies. Her debut single, "Let's Stay Home Tonight," has taken the airwaves by storm on distinguished radio stations like CBC and Wave 89.3.

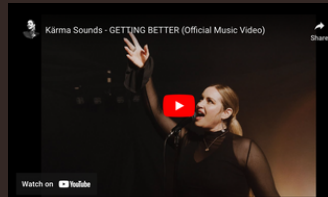
She has been a prominent figure in the music scene for years, initially as the lead of the chart-topping girl group, Jaï, and later as the front woman of world, funk sensation and International Jazz Fest headliners- Coco Jafro.

Kârma Sounds' distinctive blend of retro R&B and electro soul-pop will ignite your heart and soul. Inspired by the music of legends like Sade, Chaka Khan, Eurythmics and Norah Jones, Kârma Sounds has created a sound that is entirely unique and her own.

Prepare to be transported to an ethereal realm, where Kârma Sounds' performances will mesmerize you with their hypnotic allure. Her upcoming album, slated for release in 2024, has already generated immense excitement among her devoted followers. As a true music enthusiast, you won't want to miss the opportunity to immerse yourself in Kârma Sounds' world and experience her electrifying performances that are nothing short of magical.



VIDEO



PRESS

'Kärma Sounds' vocal performance is sublime; the soulful and expressive delivery perfectly conveys the emotions of the song's lyrics"

PLASTIC MAGAZINE UK - [Review](#)

The artist's ability to touch the hearts of her listeners and tell tales via her songs demonstrates her exceptional skill"

AFX RADIO LONDON - [Review](#)

"...not only a testimony of her exceptional talent, but also a promise of a flourishing musical career,

EXTRAVAFRENCH - [Review](#)

"...evocative, intimate and malleable vocals, hypnotising the listeners with their soulful and jazzy character..."

MESMERIZED - [Review](#)

WAVE 98.3 RADIO - [Interview](#)

CANVAS REBEL - [Interview](#)

MEDIUM - [Interview](#)

EACH MEASURE - [Interview](#)

